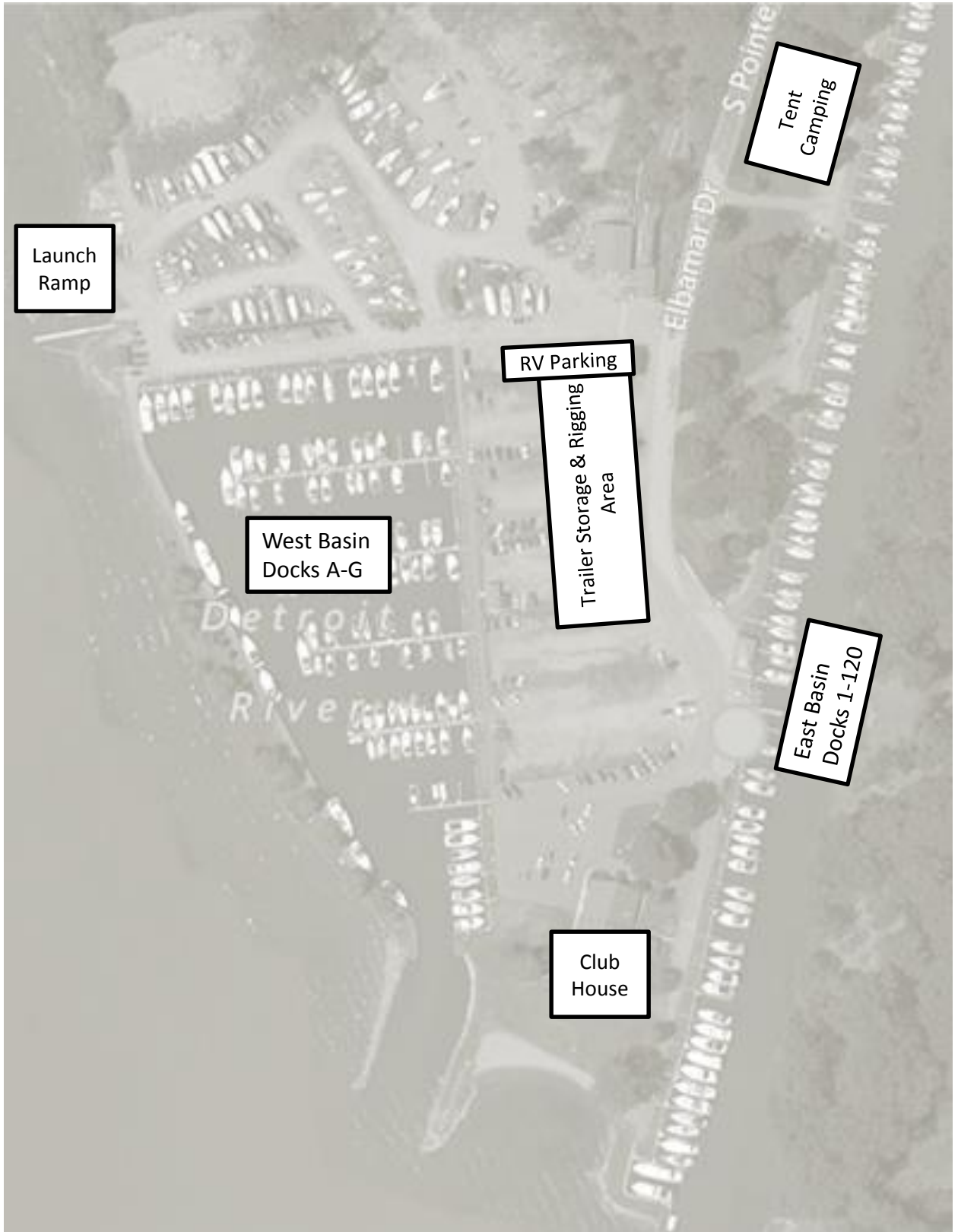




FLEET 15



Launch Ramp

West Basin
Docks A-G

RV Parking

Trailer Storage & Rigging
Area

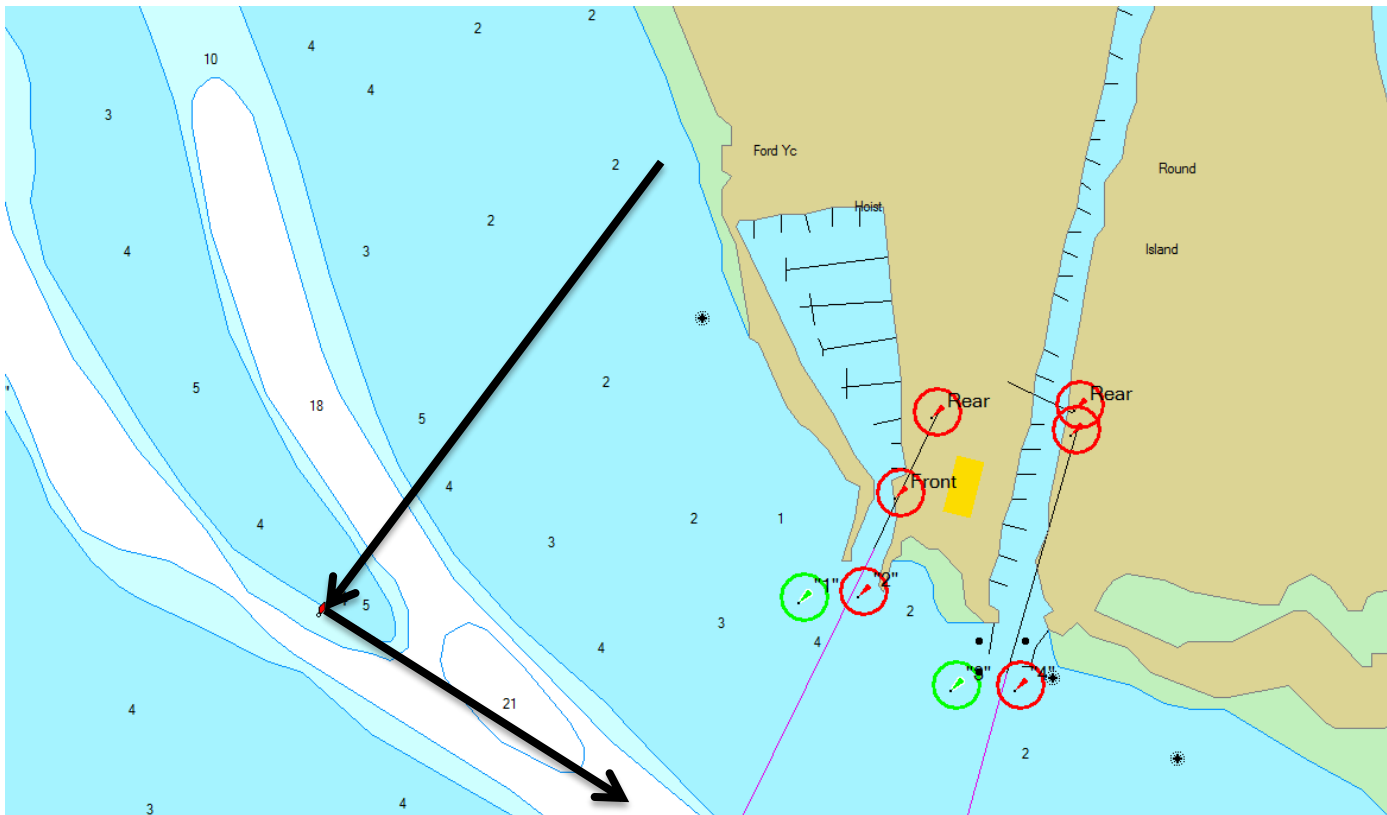
Club
House

Tent
Camping

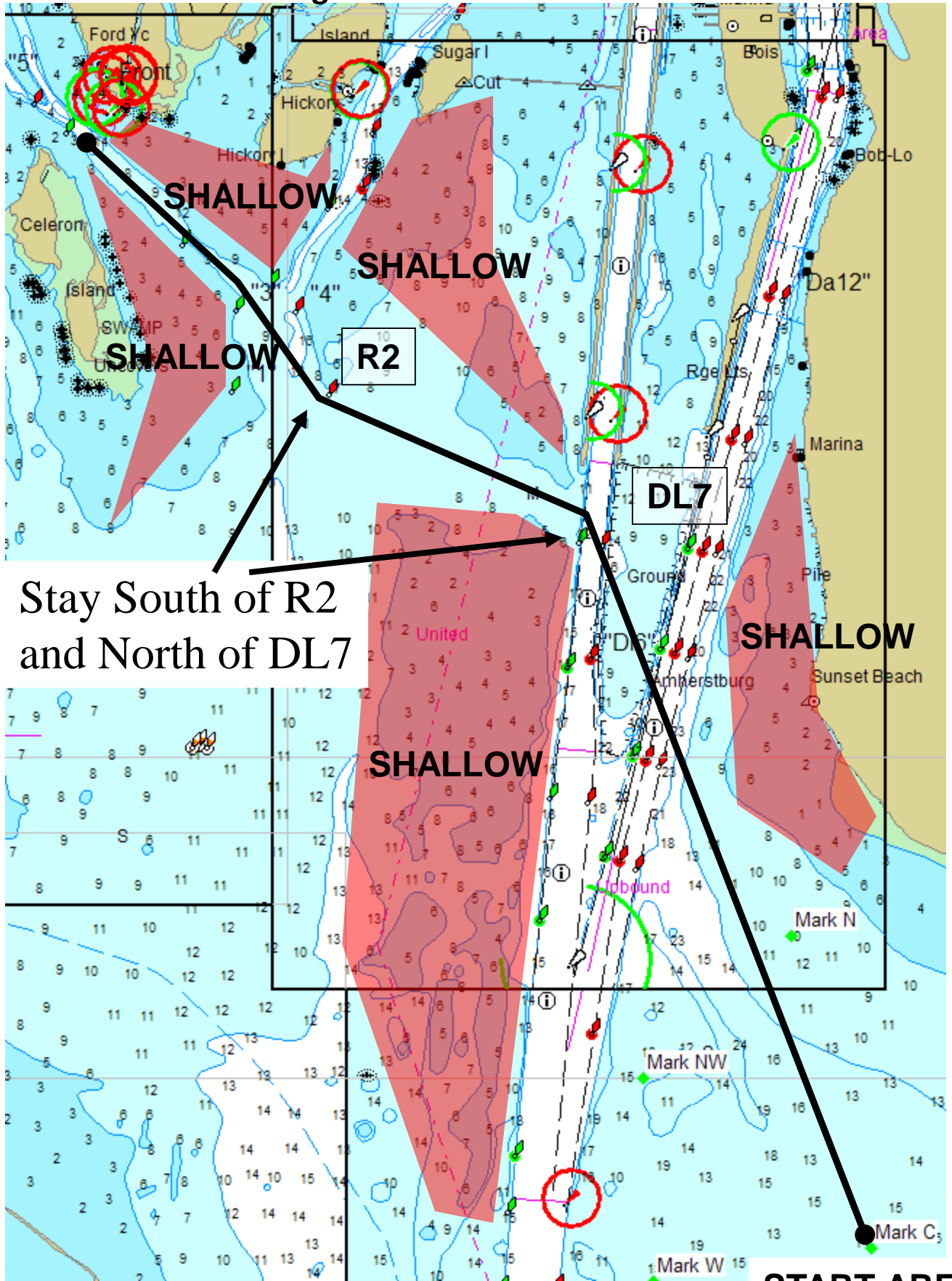
East Basin
Docks 1-120

After launching at the small boat harbor, leave the harbor and head straight for red buoy #4. This will keep you in approximately 6 feet of water until you reach the channel.

Both West and East Harbors are marked with range lights and will keep you in deep water entering into either harbor.



Recommendations to get to and from the course



Stay South of R2
and North of DL7

START AREA